



Potable water through contaminated land

Protecta-Line



The tried and trusted barrier system.

The UK Government has pledged to produce around 300,000 homes per year, every year, leading well into the mid-2020s. They've recently announced almost £2bn in funding and have invested specifically in helping to unlock 1,500 hectares of brownfield land.

With that in mind, it's crucial that housebuilders, developers and water utilities are using the appropriate systems designed to protect against the ingress of contaminants into potable supply networks.

For over 25 years this job has been entrusted to our complete barrier pipe system, Protecta-Line.

The Protecta-Line range is the market-leading, tried and trusted barrier pipe system for the safe transportation of drinking water through areas of contaminated land and sites with future potential contamination concerns.

Protecta-Line is fully approved to BS 8588, the British standard for barrier pipes and fittings. Specifying a complete barrier system, which has been proven to meet this

standard, offers contractors, developers and water utilities the reassurance that a safe and reliable solution is being installed.

From concept design and specification advice, through to delivery, tailored training packages and on-site installation support, Aliaxis are here at every step of the way.



#wearealiaxis

We keep life flowing by ensuring the safe and continuous movement of water, gas, and energy across infrastructure networks, building services and industrial processes.

From specification and advice on predefined schemes through to fabrication design and training, we tackle the most

complex fluid management challenges with the curiosity to think differently and the courage to challenge the status quo.

It's this fluid thinking that we use to collaborate with experts across the whole value chain, to deliver true peace of mind to our partners.

Protecta Line

Protecta-Line Pipe

Protecta-Line's multi-layer construction consists of an internal polyethylene core for carrying clean water and, to provide protection, an aluminium barrier layer followed by a polyethylene layer for durability.

- Sizes 25mm to 630mm
- Brown stripes provide easy identification and comply with NJUG regulations
- Proven protection against all recognised brownfield contaminants

Protecta-Line Compression Fittings

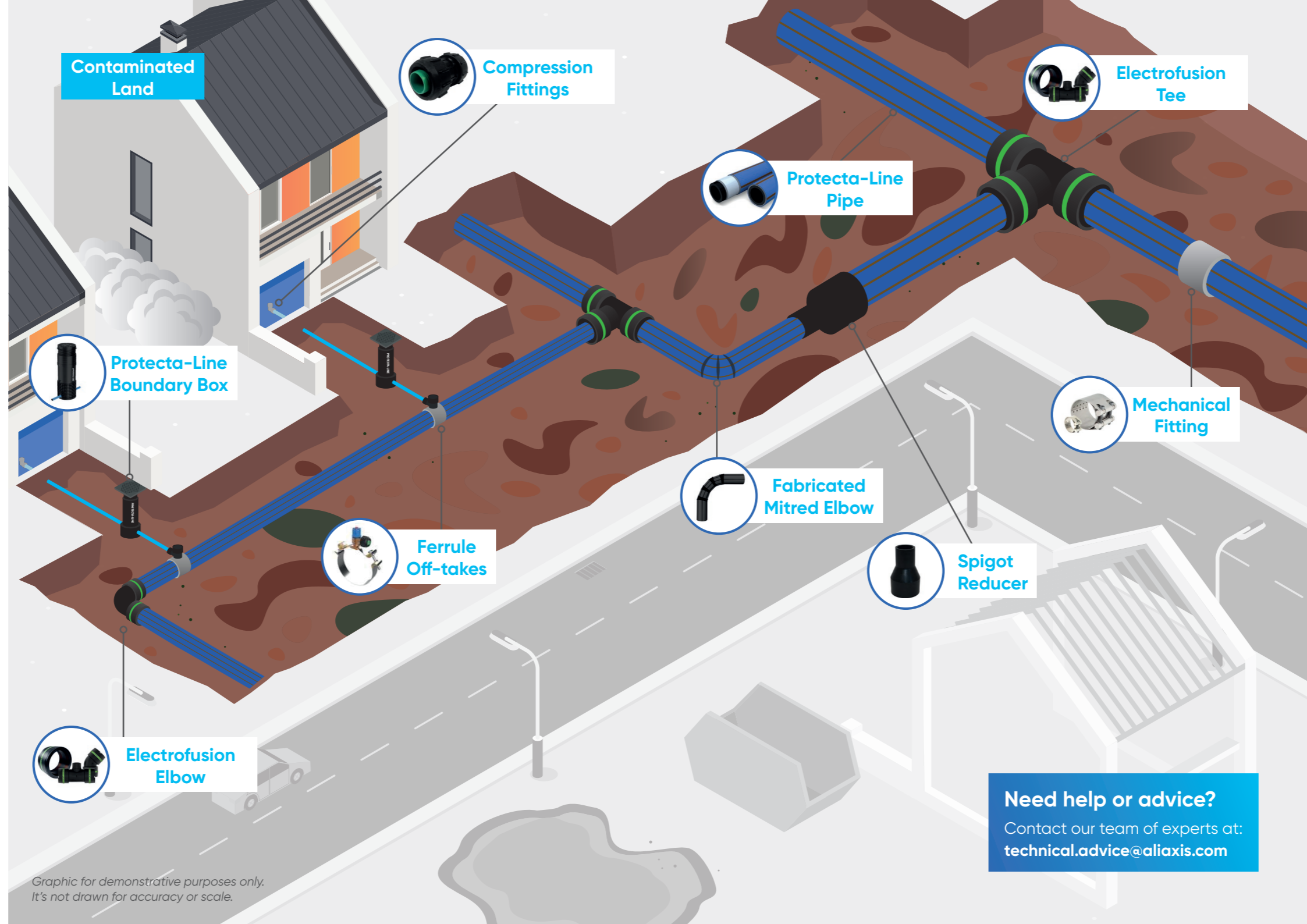
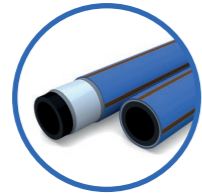
The Protecta-Line compression fittings are made from Acetal and have been independently certified as a barrier to contamination without the need of wrapping the joints after installation.

- Sizes 25mm to 63mm
- No pipe preparation, wrapping or specialist equipment is required
- No risk of joint corrosion or de-lamination

Protecta-Line Boundary Box

Our Protecta-Line boundary box uses the power of our Protecta-Line technology with the strength and versatility of our Adjusta range to produce a powerful and complete water supply solution in contaminated land applications.

- The only 'Grade B' load-bearing adjustable boundary box
- Harnesses the strength of Aliaxis' Adjusta range
- Compliant with WIS 4-37-01 and BS 5834-2



All of our fittings are BS 8588 and WRAS approved

Graphic for demonstrative purposes only.
It's not drawn for accuracy or scale.

Need help or advice?

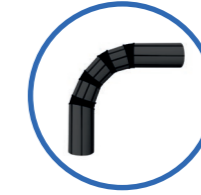
Contact our team of experts at:
technical.advice@alixaxis.com



Protecta-Line Electrofusion Fittings

The Protecta-Line Electrofusion fittings incorporate exposed heating coils to provide consistent heat transfer during fusion. They are lightweight, resistant to corrosion, have excellent chemical durability and exceptional fusibility.

- No risk of joint corrosion
- Longer fusion zones for greater reliability
- Reduced pipe misalignment



Protecta-Line Fabrications

Protecta-Line provides a comprehensive range of spigot fittings and fabrications that are made from Protecta-Line pipe. All welds are de-beaded, and factory wrapped in aluminium and protective tape to ensure complete barrier performance.

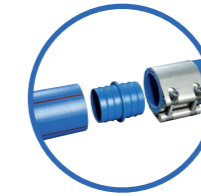
- Bespoke options available to project requirements
- Time and cost savings against on-site fabrications
- Sizes 90mm to 355mm with larger sizes upon request up to 630mm



Protecta-Line Ferrules Off-takes

Our Protecta-Line Ferrule Off-takes allow for live under-pressure tapping to prevent customers' supply of water from being affected by any mains work.

- Parent main size 355mm
- Outlet sizes 25mm to 63mm
- Single-sided fastening for quicker installation
- Multi-sized strap that reduces stock holding



Protecta-Line Mechanical Fittings

Protecta-Line mechanical fittings offer the same trusted reliability as Protecta-Line's other jointing options, but without the need for pipe end preparation or welding.

- Sizes 63mm to 180mm
- Full barrier performance
- Fast and easy all-weather solution, without the need for a power source

Aliaxis UK
St Peters Road
Huntingdon
PE29 7DA
United Kingdom
T: +44 (0) 1480 442600
alixis.co.uk/get-in-touch

alixis.co.uk

